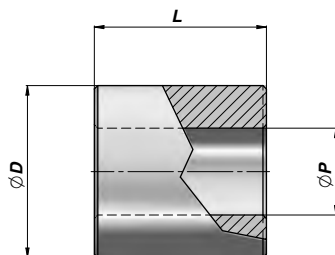
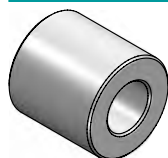


CB

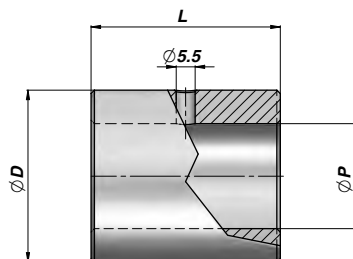
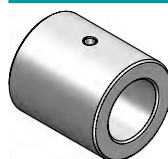
BOCCOLA
BUSH

Codice Code	ØP	ØD	L	kg	Confezione Box	Pz Pcs
CB16035030	16.25	35	30	0,18	Z50CB16035030	50
CB16035060	16.25	35	60	0,36	Z50CB16035060	50
CB20040040	20.25	40	40	0,29	Z50CB20040040	50
CB20040070	20.25	40	70	0,50	Z25CB20040070	25
CB25050050	25.25	50	50	0,56	Z50CB25050050	50
CB25050080	25.25	50	80	0,89	Z20CB25050080	20
CB25050090	25.25	50	90	1,02	Z25CB25050090	25
CB30060060	30.25	60	60	0,97	Z20CB30060060	20
CB30060110	30.25	60	110	1,79	Z10CB30060110	10
CB40070070	40.25	70	70	1,60	Z10CB40070070	10
CB40070130	40.25	70	130	2,65	Z05CB40070130	5

MATERIALE : ACCIAIO S355J0 (Fe510C)

MATERIAL : STEEL S355J0 (Fe510C)

CBF

BOCCOLA TIPO "CBF"
BUSH - "CBF" TYPE

Codice Code	ØP	ØD	L	kg	Confezione Box	Pz Pcs
CBF0012025025	12.10	25	25	0,07	Z00CBF0012025025	100
CBF0016030035	16.20	30	35	0,14	Z50CBF0016030035	50
CBF1020035040	20.25	35	40	0,20	Z50CBF1020035040	50
CBF0020040040	20.50	40	40	0,28	Z50CBF0020040040	50
CBF1025040045	25.25	40	45	0,30	Z50CBF1025040045	50
CBF0025050045	25.50	50	45	0,50	Z20CBF0025050045	20
CBF1030050055	30.25	50	55	0,50	Z20CBF1030050055	20
CBF0030050055	30.50	50	55	0,53	Z20CBF0030050055	20
CBF1030060070	30.25	60	70	1,20	Z10CBF1030060070	10
CBF0030065070	30.50	65	70	1,40	Z12CBF0030065070	12
CBF0035065060	35.50	65	60	1,09	Z10CBF0035065060	10
CBF0035065120	35.50	65	120	2,19	Z10CBF0035065120	10
CBF0050085080	50.50	85	80	2,30	Z08CBF0050085080	8
CBF0050085140	50.50	85	140	4,03	Z06CBF0050085140	6
CBF0060100090	60.50	100	90	3,51	Z05CBF0060100090	5
CBF0060100150	60.50	100	150	5,85	Z04CBF0060100150	4

MATERIALE : ACCIAIO S355J0 (Fe510C)

MATERIAL : STEEL S355J0 (Fe510C)

A RICHIESTA : INGRASSATORE VEDI PAGINA 103

ON REQUEST : GREASE NIPPLE SEE PAGE 103